



Lord Grey School is committed to giving students the opportunity to explore moral, cultural, spiritual, personal and social issues in order to develop well informed and confident students who are able to make appropriate choices in their lives and to ensure that students feel safe and comfortable in their learning. A positive culture of respect is created and this forms the basis of PSHE teaching and learning at Lord Grey School.

Lord Grey condones neither the misuse of drugs and alcohol by all members of the school, nor the illegal supply of the substances. We have a responsibility to deal with drug-related incidents and have set up procedures to deal with these. (See Diagram A)

### **Description of the School**

Lord Grey School is a comprehensive foundation school with pupils aged 11-19. There are 1600 students and they are of mixed gender. One in seven students comes from a minority ethnic background – most of these are of Indian, Bangladeshi or British Black heritage and one in twenty students have English as an additional language. One in eight students has special educational needs. The school serves one of the less affluent areas of Milton Keynes.

### **Definition**

In this document, the word 'drug' is used to include all substances that affect the way the body functions physically, emotionally or mentally. It includes legal substances such as alcohol, tobacco, volatile substances and over-the-counter and prescription medicines and illegal substances.

### **Aims and Objectives**

"Drug education is a major component of drug prevention. Drug prevention aims to: minimise the number of young people engaging in drug use; delay the age of onset of first use; reduce the harm caused by drugs; and enable those who have concerns about drugs to seek help.

The aim of drug education is to provide opportunities for pupils to develop their knowledge, skills, attitudes and understanding about drugs and appreciate the benefits of a healthy lifestyle, relating this to their own and others' actions."

Drugs: guidance for school 2.1

The aim of drug education at Lord Grey School is to provide opportunities for students to develop their knowledge, skills, attitudes and understanding about drugs and appreciate the benefits of a healthy lifestyle, relating this to their own and others' lifestyles. This includes:

- the rules and laws relating to drugs
- the short and long term effects and risks of drugs
- the impact of drugs on individuals, families and communities
- peer pressure and avoiding this
- how to seek advice
- addressing stereotypes
- analysing drugs and the media

Students explore a wide range of topics. There is an emphasis on alcohol and tobacco related aspects of education as these have been identified by students as being of most relevance and interest. (Feedback from questionnaires July 2007) This also considers the national picture of drug use:

"A recent survey found that 24% of 11-15 year olds had consumed alcohol in the previous week...educating pupils about the effects of alcohol and how to reduce alcohol-related harm is an important priority for all schools."

Drugs: guidance for schools 2.1.6

In line with the outcomes of Every Child Matters and Healthy Schools programme the school promotes healthy lifestyles and encourages students to make choices based on relevant and up-to-date information. Students have access to information in LaPD lessons, Science lessons and through the School nurse, Toni Leather.



## **Drug Education**

Drugs' education is delivered through the Science curriculum and in PSHE delivered through Learning and Personal Development lessons (LaPD). The schemes of work are written by the Head of Department, Amanda Dickinson, in consultation with teaching staff and students. Students regularly complete questionnaires and these are the driving force in the development of lessons. A parents' information evening is to be held annually in order to consult parents, governors and members of the local community. Schemes of work are available on request as is a summary of this policy. These can be collected from Student Services.

The following aspects are covered in LaPD lessons:

### Year 7 – Cigarettes and alcohol

- The law
- Dangers of smoking and alcohol
- Why people drink and smoke
- Peer pressure and advising others

### Year 8 – Drugs

- Types of drugs
- Addiction
- Saying 'no' and making choices

### Year 9 – Drugs

- Categorising illegal drugs
- Identifying drugs
- Why do people take drugs?
- Physical, social and emotional effects of drug use

### Year 10 – Personal safety

- Binge drinking
- Safety and alcohol
- Alcohol and sex
- Advising others

## **Methodology and Resources**

Students have one half term per year in Years 7 – 10 on drug education. This is supported by Drug awareness week and support from 'Compass' drug service who offer a lesson to all Year 9 students. They also regularly display and offer advice during lunchtimes. Lessons have a practical approach and uses 'Active engagement techniques' in line with the DCSF National strategy.

## **Staff support and Training**

Yearly training is offered to all LaPD staff and optional sessions are provided for all staff. All staff are aware of procedures and Adel Shirbini, Deputy Head teacher is the designated officer for dealing with incidences of drug use.

## **Assessment, Monitoring Evaluation and Reviewing**

Students are assessed using the in house assessment criteria, through a variety of assessment tasks that consider preferred learning styles, and through Yacapaca. Students evaluate SOW regularly and this feedback is integral to the development of the SOW. The LaPD teaching team regularly assess the schemes of work and develop as appropriate. Students are aware of their assessment grades in LaPD and are assessed each half term.



### **Referral and External Support**

Students at risk or involved in drug use can be referred to Compass or connexions. Referrals are handled by School Nurse Toni Leather, Connexions advisors Charlotte Carron and Michaela White, Deputy Headteacher, Adel Shirbini or Inclusion Coordinator, Amanda Dickinson.

### **Procedures for Handling Alcohol Misuse**

- The school and its premises are alcohol free zones. The school does not allow any alcohol to be brought on, or consumed on school premises.
- Anyone found to be in breach of this rule will be dealt with by the Deputy Head and Head Teacher.

### **Procedures for Handling Tobacco Misuse**

- The School and its premises are Smoke free. This applies to all students, staff and visitors.
- Anyone found to be in breach of this rule will be dealt with by the Deputy Head and Head Teacher.

### **The Management of Prescribed Medicines**

All prescribed medicines are to be held by and administered by the school nurse, Toni Leather. No student should have any medicines on their person at any time including pain-killers, inhalers and over-the-counter substances.

If a student needs to bring a prescribed medicine into school, the following guidelines must be adhered to:

- A letter from the parent explaining the nature of the illness and the dosage required must be sent with the pupil
- The medicine must be held in the medical room by Toni Leather

### **The Management of Solvents**

Pupils are not permitted to bring solvents or aerosols into school. This includes tippex fluid and pens, tippex thinners, glue, marker pens or spray deodorants. Pupils are permitted to bring felt tip pens to school.

All members of staff are responsible for the safe storage and use of solvents in their classroom. Where possible these should be locked away when not in use. This includes white board markers, glues and paints. The cleaners and caretakers should also ensure that their stores are locked when not in use and that solvents are held in a secure place.

### **Handling Incidents**

The school will consider each incident individually and employ a range of responses to deal with these.

Specific cases will be dealt with as shown in Diagram A.

The Governing Body will be informed of any drug-related incidents.

The Head Teacher will take responsibility for liaison with the media, where required. Additional support and advice is available from the Schools Drug Adviser and LA Communication Officer, Education.

A summarised version of this policy can be obtained by request from Student Services.

### **Confidentiality**

Students have the right to discuss drugs and seek advice and help confidentially in lessons or through the support of external agencies such as Connexions and compass. Where a child is deemed to be at risk (In line with diagram A) incidents are reported to Adel Shirbini, Deputy Headteacher, who will assess the situation. All teaching staff are aware of the procedures and have been informed of the protocols.



### **Involvement of Parents and Carers**

Parents are invited to a Drug Awareness evening to be held each year. Here they are given information on drug use and misuse, on the curriculum and where to seek guidance and support. Parents are given the opportunity to give feedback and their input is considered in the planning and delivery of drugs education.

### **Liaison with Other Schools**

Through continuing professional development, Amanda Dickinson, Head of LaPD, regularly is involved in local planning meetings and through the new local programme of PSHE Specialist Teachers, she is able to see good practice in Drug Education in other educational settings. This information is considered when planning opportunities for Drug Education at Lord Grey School.

Drug Policy

Updated: February 2008

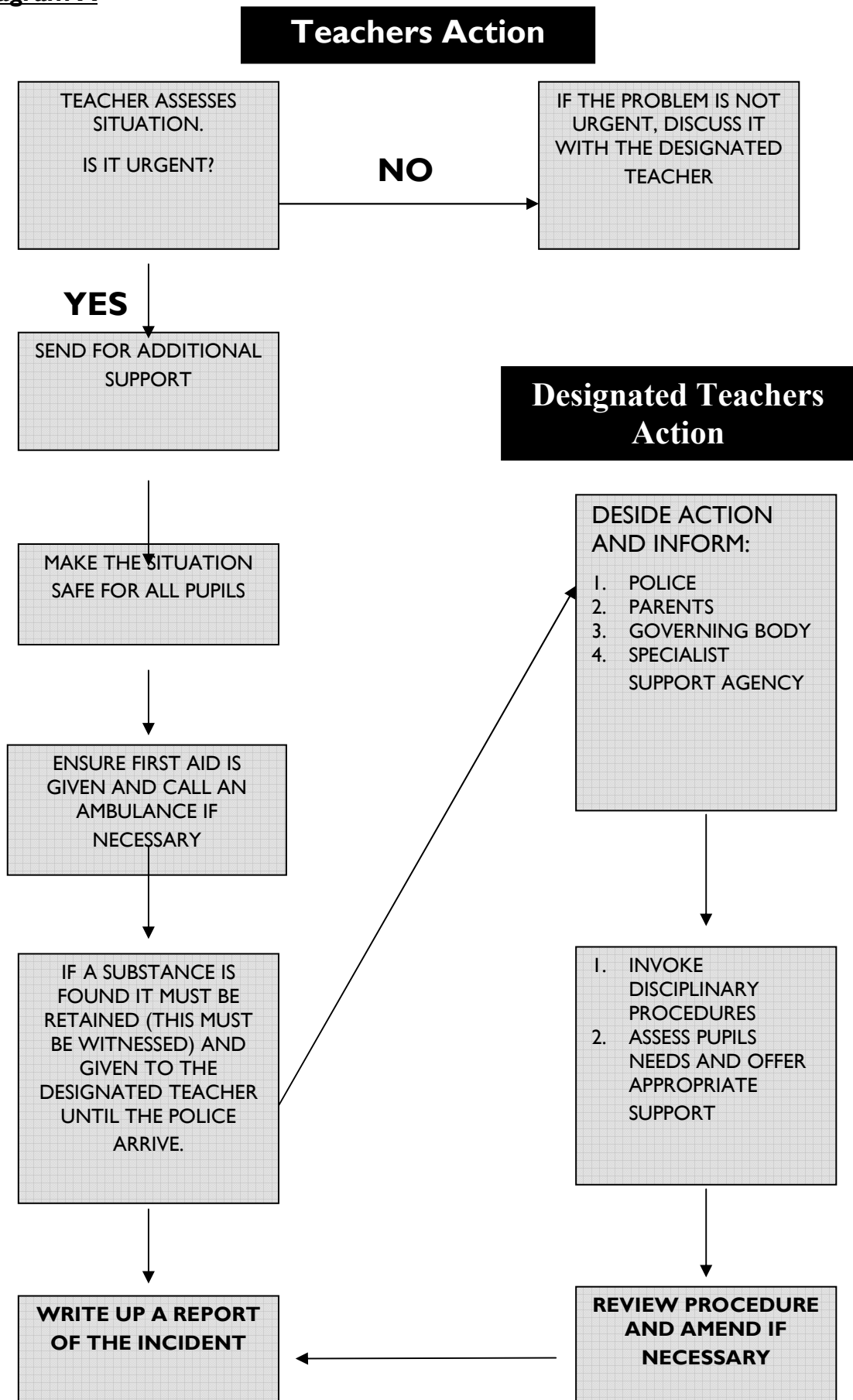
Written by Amanda Dickinson

To be reviewed by Governors

Date:



**Diagram A**





### Record of Drug-Related Situation

<b>Report Completed by:</b>	
<b>Date of incident:</b>	<b>Time of incident:</b>

Emergency/ Intoxication	Suspicion, OFF premises	Suspicion, ON premises	Discovery, OFF premises	Discovery, ON premises	Pupil Disclosure	Parent/Car er expresses concern
----------------------------	-------------------------------	------------------------------	-------------------------------	------------------------------	---------------------	--

<b>Name of Student:</b>
<b>Tutor Group:</b>

<b>Was first aid given:</b>	<b>Yes</b>	<b>No</b>
<b>If Yes, by whom:</b>		
<b>Was an Ambulance/GP called?</b>	<b>Yes</b>	<b>No</b>
<b>If Yes, by whom:</b>		

<b>Drug/s involved (if known):</b>		
<b>Sample found?</b>	<b>Yes</b>	<b>No</b>
<b>If Yes:</b>		
<b>Where was it retained?</b>		
<i>or</i>		
<b>Was it destroyed?</b>		
<b>If Yes, at what time:</b>	<b>am/pm</b>	
<b>Witness Name:</b>		

<b>Parent/Carer informed:</b>	<b>Yes</b>	<b>No</b>
<b>Name of Senior Member of Staff involved:</b>		

<b>Brief description of symptoms/situation:</b>
---

<b>Other action taken:</b> (e.g. other agency involved; Ed Psych, sanction imposed, GP/Police consulted/informed.)
--